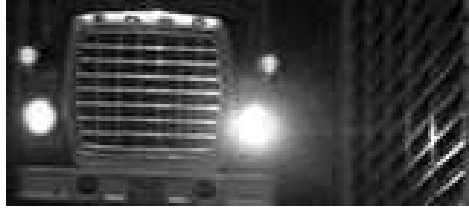


APPENDIX

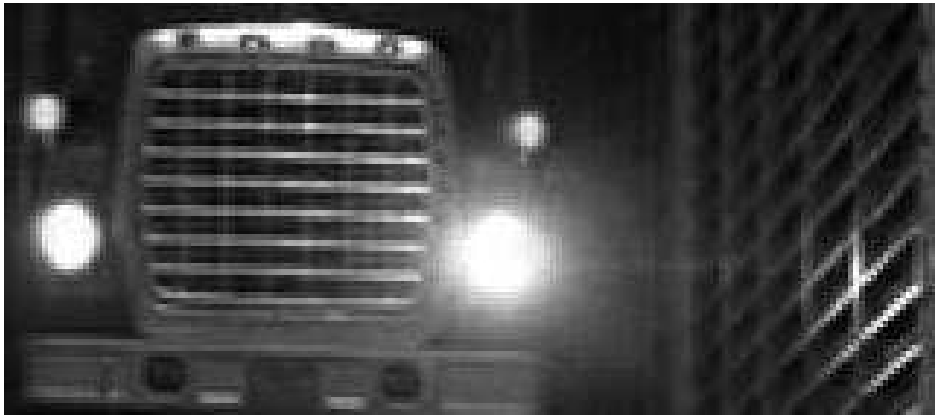
LARGE SIZE FIGURES

This is the appendix of the paper *Video Super-Resolution Using Simultaneous Motion and Intensity Calculations* by Sune Høgild Keller, François Lauze and Mads Nielsen.

To give a better impression of the output quality obtained in video super-resolution, we give some of the result figures of the experiments section of the paper here at more appropriate sizes. We still recommend electronic viewing as the printing process might smear and smooth out details or in other ways change the figures and thereby change the perception of the results.



(a) LR input (70 x 160 cutout)



(b) HR 2x2 initialization



(c) Bilinear 2x2 SR

Fig. 13. 2x2 VSR on the sequence `Truck`. 150% zoom of Fig. 3. Continued in Fig. 14.



(a) Bicubic 2x2 SR

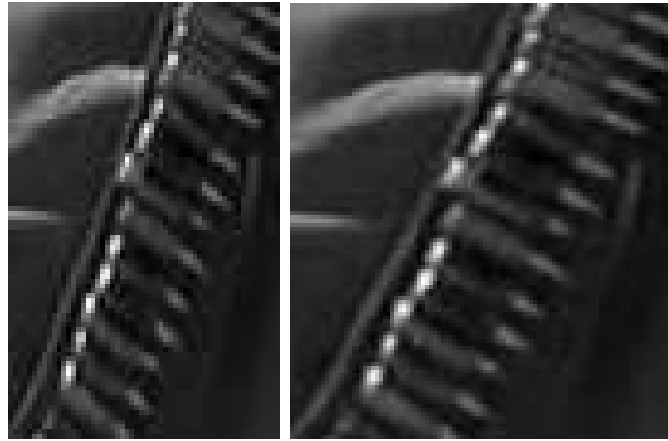


(b) Nonsimultaneous 2x2 VSR from [?]



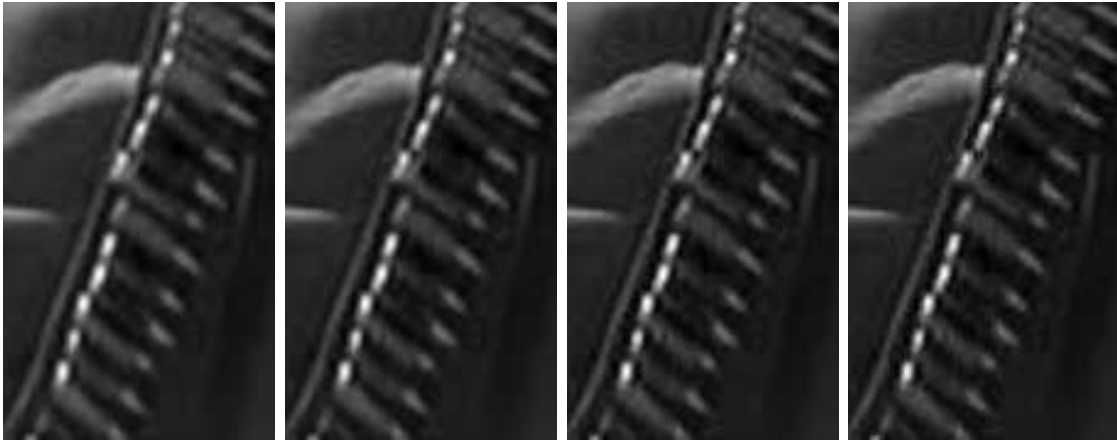
(c) Simultaneous 2x2 VSR (S-VSR)

Fig. 14. 2x2 VSR on the sequence `Truck`. 150% zoom of Fig. 3. Continued from Fig. 13.



(a) LR

(b) 720p S-VSR



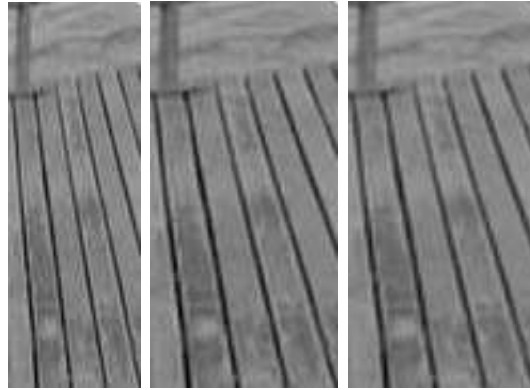
(c) 2x2 Bilinear

(d) 2x2 Bicubic

(e) 2x2 VSR [?]

(f) 2x2 S-VSR

Fig. 15. VSR on the sequence *Bullets*. 150% zoom of Fig. 5.



(a) LR

(b) S-VSR

(c) Bilinear



(d) LR



(e) 720p simultaneous VSR

Fig. 16. 720p VSR on the sequences Boardwalk and Straw Hat. 150% zoom of Fig. 6.



(a) Original



(b) 2x2 bicubic

(c) 2x2 method II.D by Farsiu *et al.*, 2004

(d) 2x2 simultaneous VSR

Fig. 17. Down- and upscaling of the sequence *Street*. 125% zoom of Fig. 9 and larger cutout: 396×350 .



(a) 4x4 bicubic



(b) 4x4 S-VSR

Fig. 18. 4x4 VSR on Straw Hat. 600% zoom of Figures 10(a) and 10(b).



Fig. 19. 8x8 bilinear interpolation off `Straw Hat`. 300% zoom of Fig. 10(c).



Fig. 20. 8x8 bicubic interpolation of *Straw Hat*. 300% zoom of Fig. 10(d).



Fig. 21. 8x8 Simultaneous VSR on Straw Hat. 300% zoom of Fig. 10(e).



(a) 4x4 bicubic



(b) 4x4 S-VSR



(c) 8x8 bilinear

Fig. 22. 4x4 and 8x8 VSR on Truck. 300% zoom of Figures 11 and 12(a).



(a) 8x8 bicubic



(b) 8x8 S-VSR

Fig. 23. 8x8 VSR on Truck. 300% zoom of Figures 12(b) and 12(c).